

FOR SALE - 3.78 ACRES
Hwy 155 at East Lake Pkwy
McDonough, GA

FICKLING & COMPANY
A Full Service Real Estate Company
commercial.fickling.com



- LOT SIZE: 3.78 acres
- FRONTAGE: 170' feet on Hwy
- UTILITIES: All available
- ZONING: C-2
- TRAFFIC: 10,500 Vehicles per Day
- NEIGHBORS: Eagle's Landing Family Practice (adjacent to property), Rite Aid at Hwy 155/East Lake Pkwy intersection, & McDonald's
- NOTES: Property is adjacent to Eagles Landing Family Practice on Hwy 155. Attached conceptual plans has a 6,000 sf to 12,600 sf office located on this property.
*See attached plat & proposed conceptual site plan

Sale Price: \$200,000 per surveyed acre

**FOR MORE
INFORMATION
CONTACT**

Trip Wilhoit, CCIM, ALC
478-746-9421
twilhoit@fickling.com

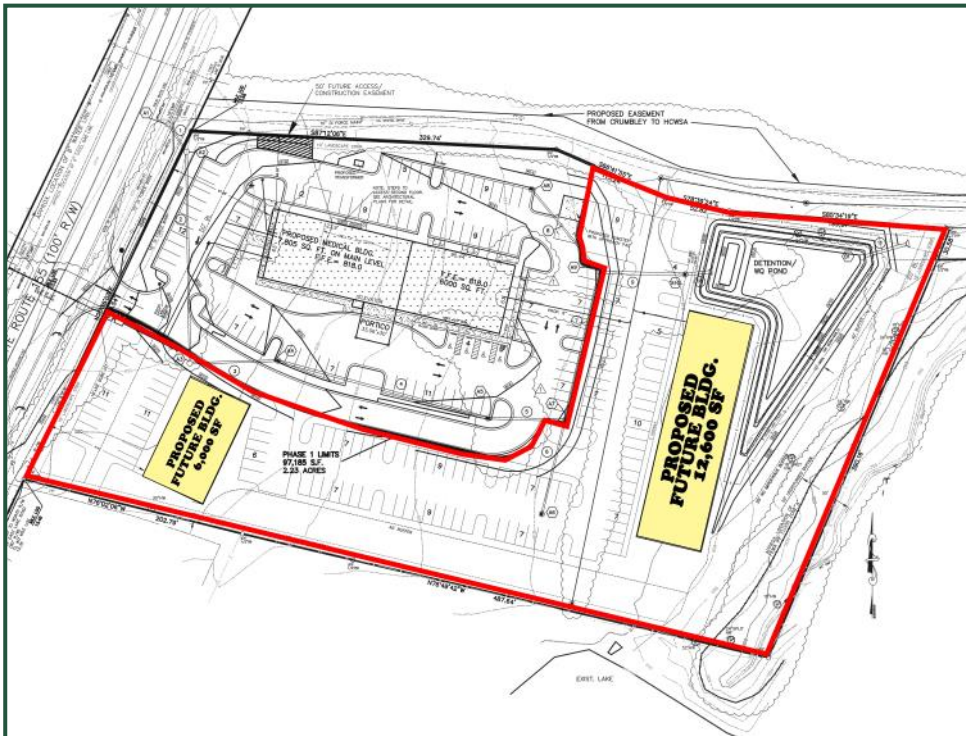
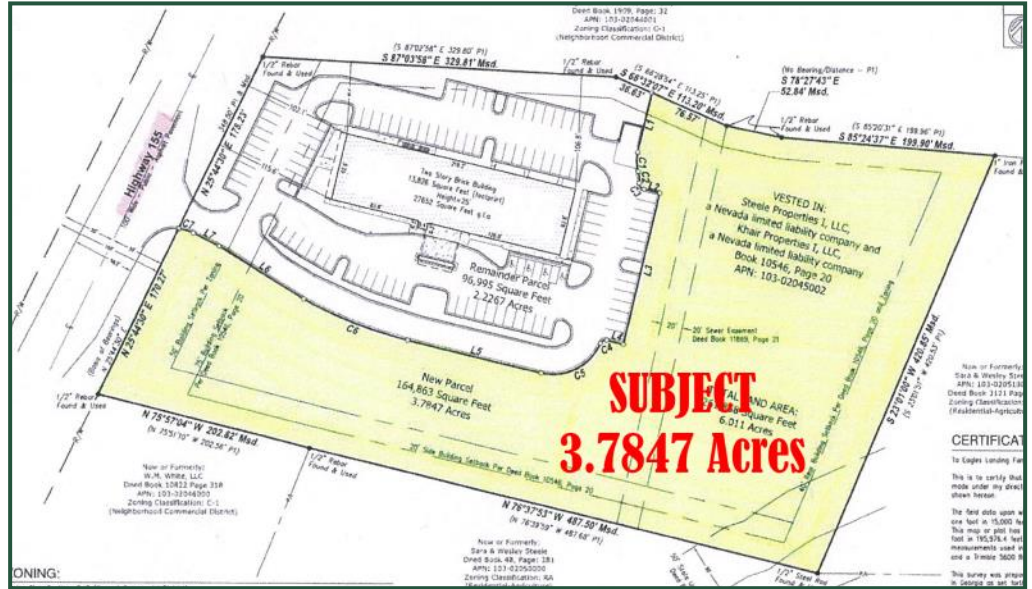
Larry E. Crumbley, CPM, CCIM, SIOR
478-746-9421
lcrumbley@fickling.com
www.lcrumbley.com

www.commercial.fickling.com

577 Mulberry St, Suite 1100 * P.O. Box 310 * Macon, GA 31202 | Phone (478) 746-9421 | Fax (478) 742-2015
This information is from resources deemed to be reliable, no warranties or guarantees for accuracy are made by Fickling and Company

FOR SALE - 3.78 ACRES
 Hwy 155 at East Lake Pkwy
 McDonough, GA

Survey



PROPOSED CONCEPTUAL
 PLAN



FOR MORE
 INFORMATION
 CONTACT

Trip Wilhoit, CCIM, ALC
 478-746-9421
twilhoit@fickling.com

Larry E. Crumbley, CPM, CCIM, SIOR
 478-746-9421
lcrumbley@fickling.com
www.lcrumbley.com

www.commercial.fickling.com